

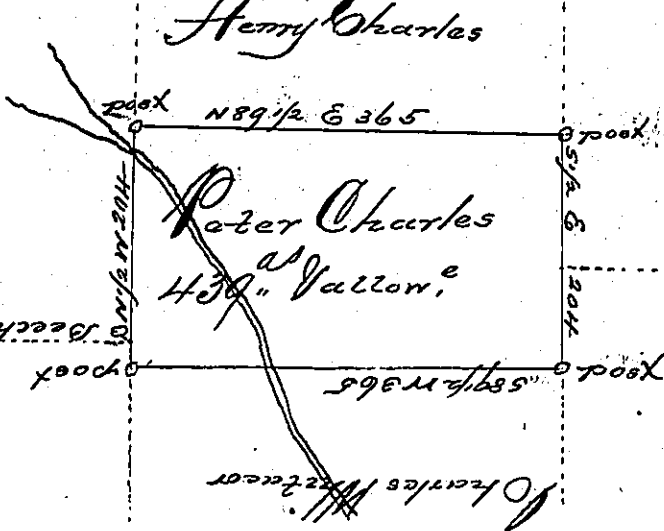
Page - 218

A-51-160

Andrew Whittecor

A-46-121

Roger Whittecor



A-43-132

Hugh Bogg

Noah Bogg

A-46-123

A Draught of a Tract of land called — Situated in the County of Luzerne, ad-
 joining Henry Charles Galters Surveyed the 14th day of September 1792
 for Peter Charles in pursuance of a Warrant bearing date the 3rd day
 of April 1792. Containing four hundred thirty nine acres & the allowance of
 six per Cent &c

Anty. Brothers S. J.

To Daniel Brodhead Esq^r
 Surveyor General

IN TESTIMONY that the above is a copy of the original remaining on file in
 the Department of Internal Affairs of Pennsylvania, made
 conformably to an Act of Assembly approved the 16th day of
 February, 1833, I have hereunto set my Hand and caused
 the Seal of said Department to be affixed, at Harrisburg,
 this 1st day of March 1904,

George B. Brown
 Secretary of Internal Affairs.